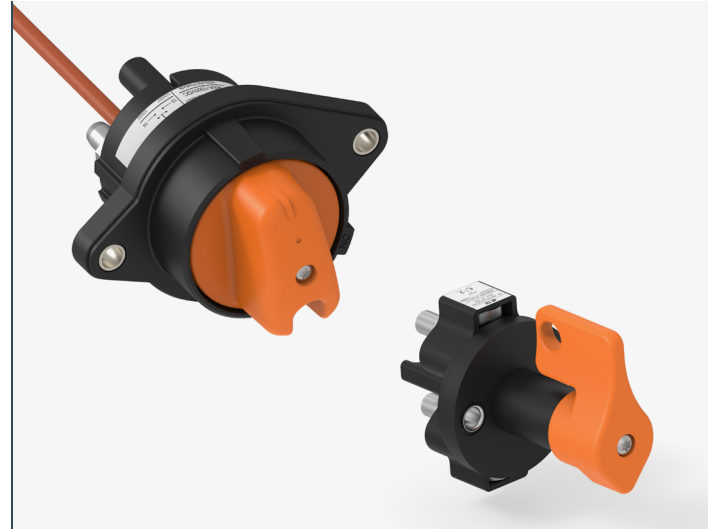


INTRODUCING HIGH VOLTAGE BATTERY DISCONNECT SWITCH

- Maximum contact voltage of up to 1000VDC @ 7000m
- Lead with safety first through “Lockout/Tagout” or removable handles



Designed to meet the rigorous demands of the industrial and commercial transportation industry, TE's high voltage (HV) battery disconnect switches from the KISSLING switches product family are robust solutions to provide the utmost safety through disconnecting power for safe maintenance.

They are now available in multiple versions: 250 A (without High Voltage Interlock) and 400 A / 500 A (with High Voltage Interlock).

Engineered to TE's high standards our HV battery switches are built to withstand extreme conditions, boasting an IP67 and IP6K9K protection class. With a high resistance to shock and vibration as well as an operating temperature range of -40°C to +85°C, they are ideal for high power applications commonly found in the truck, bus, agricultural, construction, fork-lift, marine, and other industrial vehicle markets.

KEY BENEFITS

- To provide complete integration with high voltage wiring systems with up to 1000 V operating voltage
- Reliable protection against water & dust with IP67 & IP6K9K
- Withstand extreme temperature & high resistance to shock and vibrations
- Lead with safety first through “Lockout/Tagout” or removable handles

TARGET MARKETS

- Truck
- Bus
- Construction
- Agriculture
- Ground support vehicles
- Fork lift
- Marine
- Aircraft

APPLICATIONS

- Disconnect main power or accessory system power for safe maintenance
- Battery shutdown in vehicle applications
- Theft prevention / protection against unauthorized use of the vehicles or equipment

CONNECTOR SPECIFICATIONS

- Models available for 400 A and 500 A ratings, 250 A models available without HVIL
- All models rated for 1000VDC
- Fully sealed (IP67 / IP69K) - Seal rating not affected with handle removed
- Operating Temperature: -40°C to +85°C
- 5000+ mechanical operations
- Easy-to-operate rotary handle
- HVIL contact sequencing for safety

LEARN MORE

- [Landing Page](#)
- [Part List Page](#)
- [Datasheet](#)